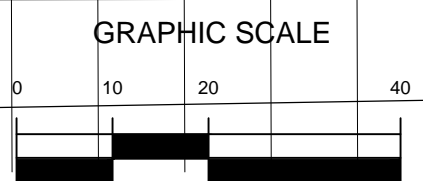
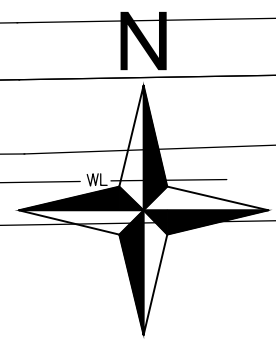
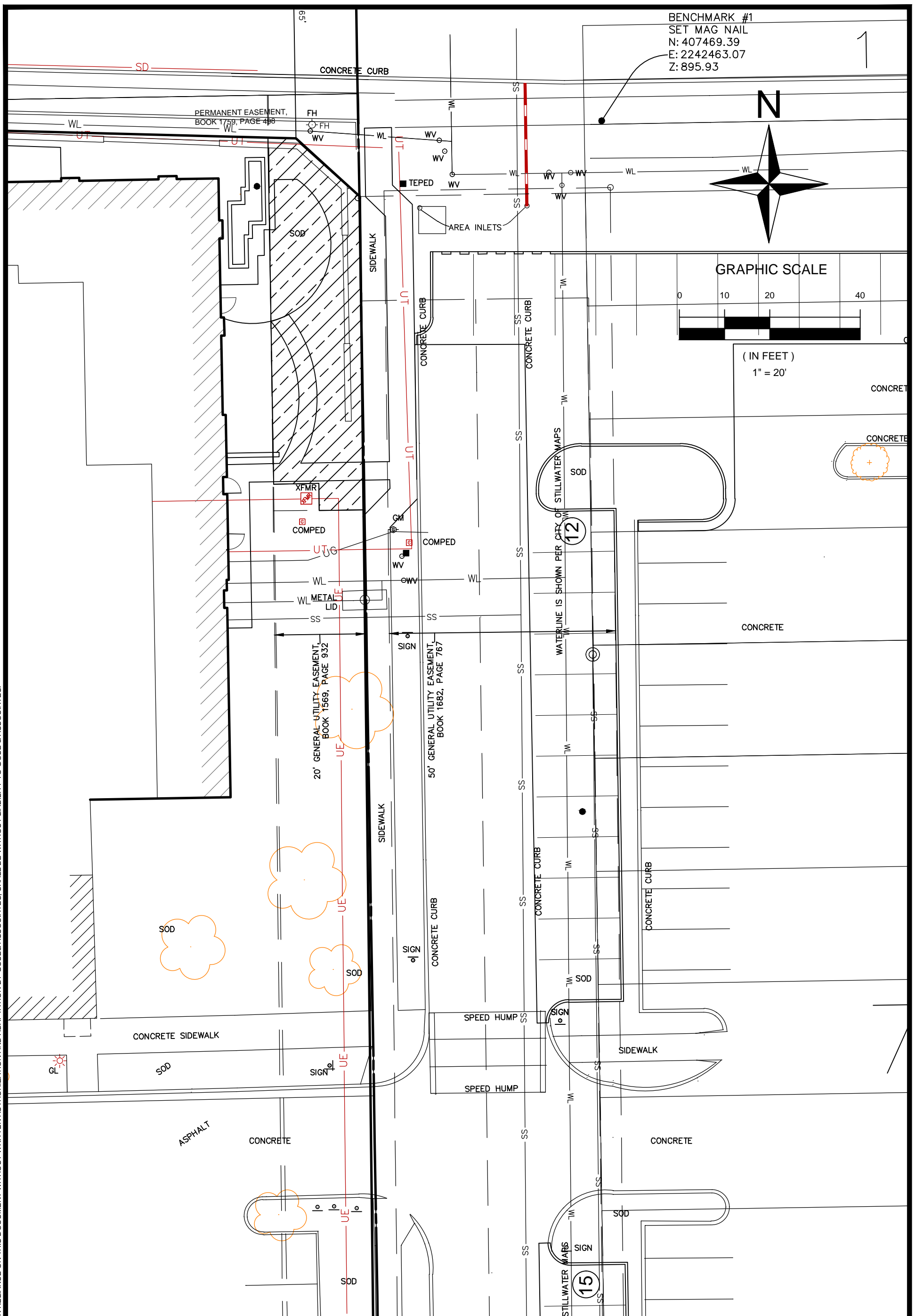


THIS DOCUMENT TOGETHER WITH THE CONCEPTS AND DESIGN PRESENTED HERE IN, AS AN INSTRUMENT OF SERVICE, IS INTENDED ONLY FOR THE SPECIFIC PURPOSE AND CLIENT FOR WHICH IT WAS PREPARED. REUSE OF AND IMPROPER RELIANCE ON THIS DOCUMENT WITHOUT WRITTEN AUTHORIZATION AND ADAPTATION BY GOSE & ASSOCIATES, SHALL BE WITHOUT LIABILITY TO GOSE & ASSOCIATES.

BENCHMARK #1
SET MAG NAIL
N: 407469.39
E: 2242463.07
Z: 895.93



(IN FEET)
1" = 20'



PARTIAL EASEMENT
CLOSURE
1201 W. 6TH AVE.
SCALE: AS SHOWN
DATE: 03/07/2017
JOB NO: 237-41



**Gose &
Associates**
ENGINEERING • PLANNING • LAND SERVICES

113 E. 8th Avenue Stillwater, OK 74074 PH (405) 743-4907 CA 1640
www.gose-associates.com

Received 03.07.17
PZ.17.2172 MH